

Black Minnaloushe (USA)

Storm Cat – Coral Dance by Green Dancer

Coral Dance, dam of multiple Gr1 winner **Black Minnaloushe**, is quite some girl.

A **Gr1** runner-up as a 2yo herself, she excelled at stud, producing three Gr1 winning sons from different sires.

Three-time **Gr1** winner in the USA **Nasr el Arab**.

Three-time **Gr1** winner **Pennekamp**, unbeaten at 2, winner of the English 2000 Guineas at 3.

And **Black Minnaloushe**, whose **Gr1** wins include the Irish 2000 Guineas.

That wasn't all.

The trio have a half sister who's the dam of **Gr1** Breeder's Cup Distaff winner **Round Pond**, and there are two other half siblings, one won a stakes, the other produced a stakes winner.

Coral Dance is a daughter of Nijinsky-sire Green Dancer, and comes from a French female line with an interesting make-up. The pedigree of Coral Dance shows inbreeding 4x4 to close genetic relatives Vieux Manoir and Casserole.

Following on to Casserole, she's closely inbred, 3x2 to close genetic relatives Viridiflora and Zanetta. The latter pair are both by Sans Souci out of mares by Le Sancy, and one of them, the mare Zanetta has a pedigree background which strongly resembles Mumtaz Mahal.

This relationship was exploited when Casserole visited sire Loliondo, a stallion by Badruddin (Blandford x Mumtaz Mahal), to get a daughter, Copelina. Casserole herself was by Brantome (Blandford x Vitamine, whose dam Viridiflora was a genetic sibling of Zanetta). Badruddin and Brantome, for that reason, become very close in their genetic make-up.

The upshot is that Copelina has Badruddin and Brantome 2x2, and Mumtaz Mahal x Zanetta 3x3.

Apart from being the dam of Badruddin, Mumtaz Mahal is mostly found in modern pedigrees as the dam of Mumtaz Begum and Mah Mahal. Descendants of this pair include Nasrullah, Royal Charger and Mahmoud, all influential sires. Conventional wisdom has it that the addition of a diversity of these relatives would enhance the achievements of the family of Coral Dance. Surprisingly, it would be a while before any bulking up of this kind materialized.

Copelina was sent to Fine Top, a stallion whose pedigree doubled up on elements highlighted earlier in the mare's background: Le Sancy, Sans Souci, Bruleur and Blandford. The result of the



Joker's Wild, champion 2yo
from the first crop of **Black Minnaloushe**
- his dam carries six lines of
Mumtaz Mahal

Coral Dance was fully set up to hit the big time.

union was a filly, Coraline, who went on to produce three stakes winners, of which

Black Minnaloushe's grandam Carvinia was one. Another was the colt Carvin (TFR 127), who as a sire got champion filly Pawneese (TFR 131), winner of the English and French Oaks and the King George.

The dam of Pawneese was by Le Haar, a son of Vieux Manoir – giving the same Casserole x Vieux Manoir genetic sibling cross as found in Black Minnaloushe's dam Coral Dance. The explosive part was that the dam of Pawneese was already inbred 2x3x2 to Vieux Manoir and two other of his genetic siblings, Cannelle (grandam of Le Haar) and Nordiste (the mare's damsire). Pawneese, in other words, had a fourway cross of genetic siblings, 4x3x4x3.

Back to Black Minnaloushe's grandam Carvinia, who is a half sister to Pawneese's sire

Carvin, and who was sired by Diatome. The latter's fourth dam Lanette had all of Sans Souci, le Sancy and Rabelais, and added the third genetic leg to the double of Zanetta and Viridiflora already present in Casserole, the earlier mentioned mare in the bottom female line.

The next mating, which resulted in Coral Dance, was an inspired one. It came through sire Green Dancer, whose damsire Val de Loir was by Casserole's genetic equivalent Vieux Manoir, further enhancing the strong foundation which now included six lines of Rabelais and his full sister Simone. Coral Dance was fully set up to hit the big time.

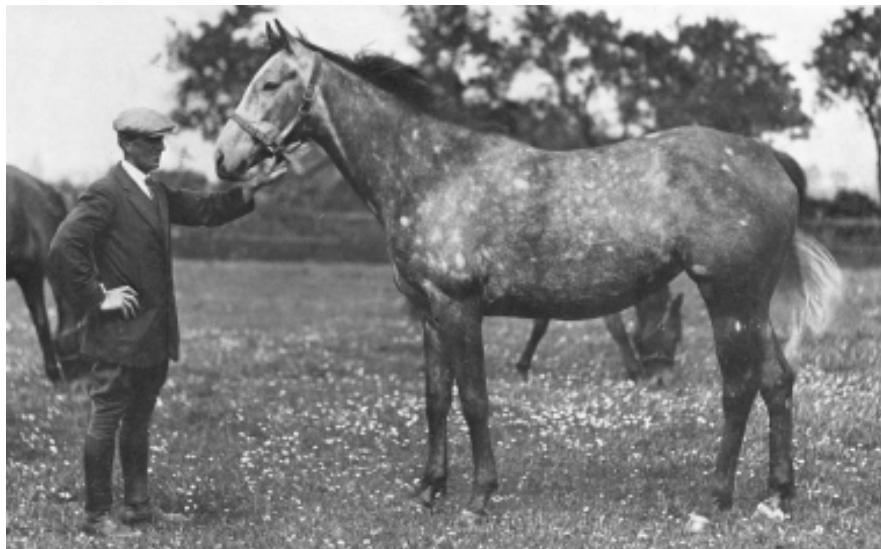
Coral Dance's Gr1 winning son Pennekamp was by Bering, who doubled many of the salient lines from the female pedigree. Lyphard and Le Fabuleux played their part in this, but the thrust may well have come from Sea Bird's dam Sicalade, whose pedigree construction makes her a genetic sibling of Carvinia, the grandam of Pennekamp (and Black Minnaloushe).

Another Gr1 winning son of Coral Dance, Nasr el Arab, was by Lyphard's son Al Nasr. Lyphard brought suitable elements, while Al Nasr's damsire Caro, a grandson of Grey Sovereign, introduced Nasrullah for the first time into the mix, be it remotely.

Nasrullah was closer when Black Minnaloushe was conceived, from a mating to Storm Cat. The latter's damsire Secretariat is by Bold Ruler (Nasrullah), while Storm Cat's sire Storm Bird is inbred 4x4 to genetic siblings Mahmoud and Preciptic.

Mumtaz Mahal had finally arrived.

Mumtaz Mahal
 - best 2yo of her generation;
 her descendants include
 Nasrullah, Mahmoud and
 Royal Charger,
 who seem to be important to
 Black Minnaloushe



In his very first New Zealand crop Black Minnaloushe got champion 2yo colt Jokers Wild. The champion's dam is by Rory's Jester (Nasrullah male line), his grandam by Rancher (Nasrullah male line), his third dam by Grey Sovereign (grandson of Nasrullah). The female half of the pedigree has six lines of Mumtaz Mahal in all.

Black Minnaloushe got Gr2 placed Black Charmer in Ireland, and stakes winner Act Of God in the USA. Continents apart, they were born in the same year, both out of mares by Robellino. The latter's grandam Isobella is by Bold Ruler

(Nasrullah) out of **"Tying in with the bottom female line of Black Minnaloushe appears to be the key"**

Monarchy, who is a full sister to Round Table (Princequillo). The Bold Ruler x Princequillo double can also be found in Storm Cat's damsire Secretariat. Robellino's damsire is Pronto, a sire from the Tourbillon male line (Bruleur & Rabelais), with Badruddin as his second damsire. And, not to forget, Robellino is by Roberto whose dam is by Nashua (Nasrullah). There are 9 lines of Mumtaz Mahal in Black Charmer's dam. Act of God gets better, as his third dam is inbred 3x3 to Nasrullah. In fact, the dam of Act of God has Mumtaz Mahal six times.

Australian Gr3 performer Stormpede has a dam whose sire is inbred to Nasrullah and who is from the My Babu male line (My Babu is out of Perfume, a daughter of Badruddin), while the grandam is from the Royal Charger male line and inbred to Nasrullah and his full sister Rivaz.

Stakes placed Yates Black Cat (USA) is out of a mare inbred 4x3 to Bold Ruler. His fourth dam Now Voyager is by Naskra, whose sire Nasram is by Nasrullah and whose dam is by Le Haar.

Where From Here

Tying in with the bottom female line of Black Minnaloushe appears to be the key. This can be done through doubling up on existing lines, such as Brantome, notably through son Vieux Manoir and the next generation, le Haar. There are many more combinations. An alternative is to make use of genetic siblings who tie in with bottom female line elements, expressed through Casserole. This leads to Mumtaz Mahal and her descendants. On the face of it, mares by male-line descendants have done well (eg from sire-lines of Nasrullah, Royal Charger). On the whole, a strong background of these

different ancestors (Nasrullah & full sisters, Royal Charger & full sister, Mahmoud, Badruddin, etc) in a mare may pay off well. The two good progeny of mares by Robellino should be kept in mind - it also points in the direction of Roberto's Al Mufti.

Multiples of Rabelais and full sister Simone appear to have a beneficial effect as well. They are quite well spread; for example, Wild Risk, Rialto (Sicambre), Biribi (Lyphard, Sea Bird), Charlottesville/Sheshoon



Black Minnaloushe

PICK OF THE BUNCH

*Suitable mares for
 Black Minnaloushe could include*

1. Mares with combinations of Brantome, Bruleur, Sans Souci, le Sancy (which will appear beyond the first three generations in pedigrees)
2. Mares with multiples of Rabelais and full sister Simone - eg Wild Risk (Blushing Groom), Rialto (Sicambre, Jamaico), Biribi (Lyphard, Sea Bird), Charlottesville/Sheshoon, Tourbillon x Asterus combo's, etc.
3. Mares with multiples of descendants of Mumtaz Mahal - eg Nasrullah & sisters Rivaz, Malindi; Royal Charger & sister Tessa Gillian; Mahmoud; Badruddin, etc.

are carriers.

Blushing Groom and especially Jamaico might be interesting in the local context, as might Counter Action and Captain Al.

standing at:
 MAINE CHANCE FARM, Robertson
 Stud Manager: John Slade
 Cell: 083 630 0433
 Tel: 023 626 2342
 Fax: 023 626 2585
 eMail: info@mainechance.co.za